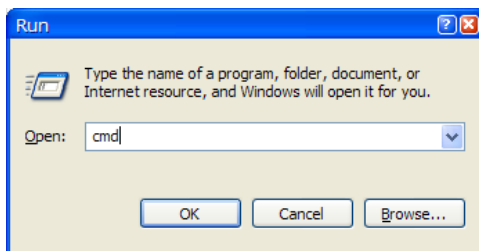


## How to obtain your computer's volume drive letter, serial number, and mac address

1. On a Windows machine, go to **Start > Run**
2. Type **cmd** and press OK



3. Type **vol** and press **Enter**. Note down your drive letter and volume serial number. For e.g. the drive letter is C and volume serial number is 622D-25EB for the machine shown below.

```
Microsoft Windows [Version 5.2.3790]
(C) Copyright 1985-2003 Microsoft Corp.

C:\Documents and Settings\MBajaj>vol
Volume in drive C has no label.
Volume Serial Number is 622D-25EB

C:\Documents and Settings\MBajaj>_
```

4. Type **ipconfig /all** and note down the mac address of any of your physical network cards. For e.g., the mac address for the network card shown below is 00-1C-C4-AD-DF-8F.

```
C:\Documents and Settings\MBajaj>ipconfig /all

windows IP Configuration

Ethernet adapter Local Area Connection - TopPort:

    Connection-specific DNS Suffix . . . :
    Description . . . . . : NVIDIA nForce Networking Controller #2
    Physical Address. . . . . : 00-1C-C4-AD-DF-8F
    DHCP Enabled. . . . . : Yes
```

5. Email the drive letter, volume serial number, and mac address to [info@intercax.com](mailto:info@intercax.com) to receive your license file and download link access.